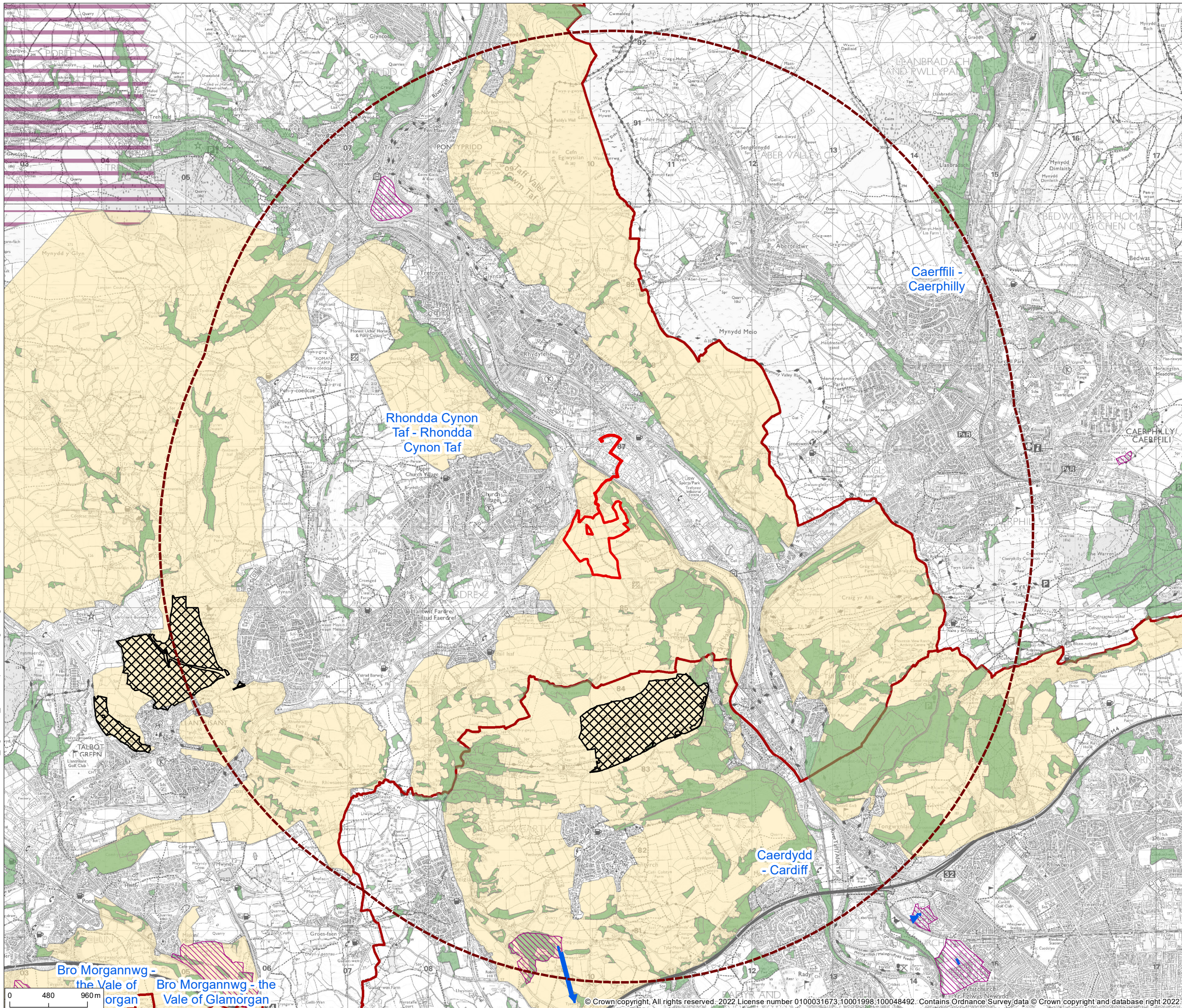


P:\3500 Series\JSL3514 - Maes Mawr Solar Park\Tech\GIS\JSL3514 - Figure 5.2 - Landscape Planning Designations.mxd



© 2022 RPS Group
 Notes
 1. This drawing has been prepared in accordance with the scope of RPS's appointment with its client and is subject to the terms and conditions of that appointment. RPS accepts no liability for any use of this document other than by its client and only for the purposes for which it was prepared and provided.
 2. If received electronically it is the recipient's responsibility to print to correct scale. Only written dimensions should be used.

Legend

- Application Site Boundary
- Study Area (5km radius)
- Significant Views
- Historic Parks and Gardens
- Registered Common Land
- Ancient Woodland
- Lancarfan Historic Landscape
- District Boundary
- Special Landscape Areas



Rev	Description	By	CB	Date



Lakesbury House, Hillingbury Road, Chandlers Ford, Hampshire SO53 5SS
 T:02380 810 440 E: rpsso@rpsgroup.com

Client Elgin Energy EsCo Limited
Project Maes Mawr Solar Park
Title Landscape Planning Designations

Status CONSULTATION
Drawn By GL
PM/Checked By PH

Project Number JSL3514
Scale @ A3 1:45,000
Date Created APR 2022

Figure Number 5.2
Rev -

rpsgroup.com