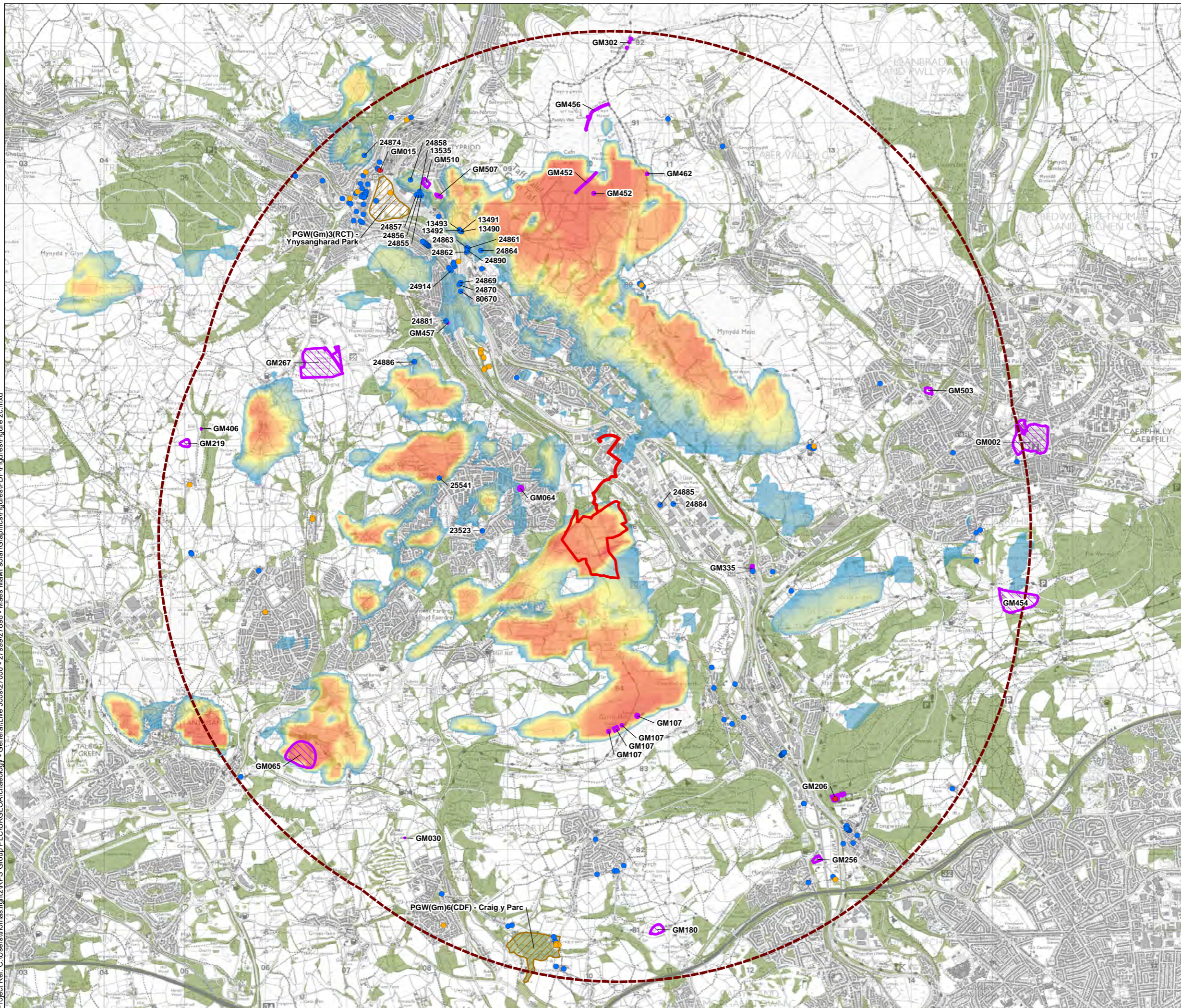


Project Ref: C:\Users\thomas.light\OneDrive - RPS Group PLC\UK\GI\Archaeology - General\Live Jobs\27000 - 27999\27898 - Maes Mawr solar\Graphics\Figures\PDF\Figures\Figure 2c.mxd



Legend

- Application Site Boundary
 - Study Area (5km radius)
 - Woodland
 - Settlement
- ZTV (theoretical extent of surrounding landscape from where the proposed solar park may be visible)**
- Low Visibility (up to 1 origin point)
 -
 -
 -
 -
 -
 -
 - High Visibility (up to 18 origin points)
- Designated Heritage Assets:**
- Scheduled Monument
 - Historic Parks & Gardens
 - Grade I Listed Building
 - Grade II* Listed Building
 - Grade II Listed Building

Note: ZTV compiled assuming observer height as 1.5m at eye level, and takes into account screening effects of local settlements at 9m and existing vegetation / woodland at a height of 12m.

19 origin points, from within the Application Site, have been used to illustrate the full parameters of the proposed development. Including:
- 19 origin points (in total), set at 3.2m above existing ground level (EGL), within the centre of each of the fields of the application site containing solar panels.

OS Terrain 5 data has been used for generating the ground model.

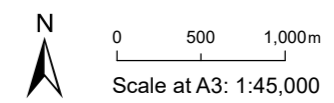


Figure 7.2
Designated Heritage Assets in relation to the Zone of Theoretical Visibility